

RIVACOLD

MASTERING COLD

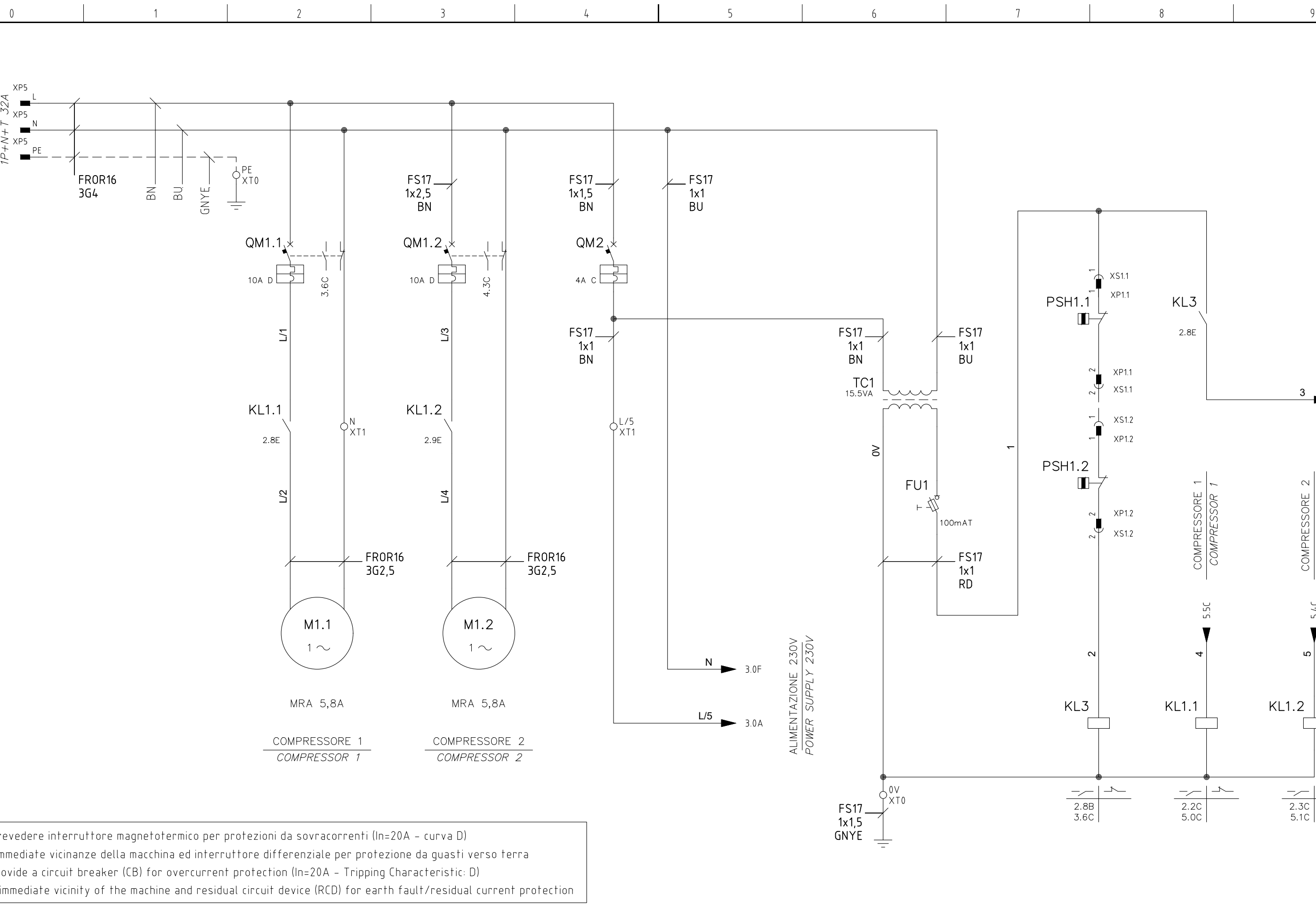
Non è permesso consegnare a terzi o riprodurre questo documento né, utilizzare il contenuto o renderlo comunque noto a terzi senza la nostra autorizzazione esplicita. Ogni infrazione comporta il risarcimento dei danni subiti. E' fatta riserva di tutti i diritti derivati da brevetti o modelli.

PROGETTO
BANCA DIS.
TIPICO

2xNTX2211U-A-CSR	NORMA: NORM:	CE	CEI EN 60204-1
CORRENTE MASSIMA: MAXIMUM CURRENT:	14,3A	TENSIONE ESERCIZIO: POWER SUPPLY:	230V / 1F+N~ / 50Hz / ±10%
CORRENTE ASSORBITA ALLE CONDIZIONI DI LAVORO: CURRENT CONSUMPTION AT WORKING POINT:	9,8A	TENSIONE CIRCUITI AUSILIARI: AUXILIARY CIRCUITS VOLTAGE:	230V
POTENZA ASSORBITA ALLE CONDIZIONI DI LAVORO: POWER CONSUMPTION AT WORKING POINT:	1,80kW	TENSIONE CONTROLLO ELETTRONICO: ELECTRONIC CONTROL POWER SUPPLY:	230V
BT	CORRENTE CORTO CIRCUITO: SHORT CIRCUIT CURRENT:	I _{cc} 10kA	CODICE MACCHINA: MACHINE CODE:
R290	NORMA RIF: NORM REF:	CEI EN 60947-2	CODICE QUADRO ELETTRICO: ELECTRICAL BOARD CODE:
			2127-0014
			5603-0040

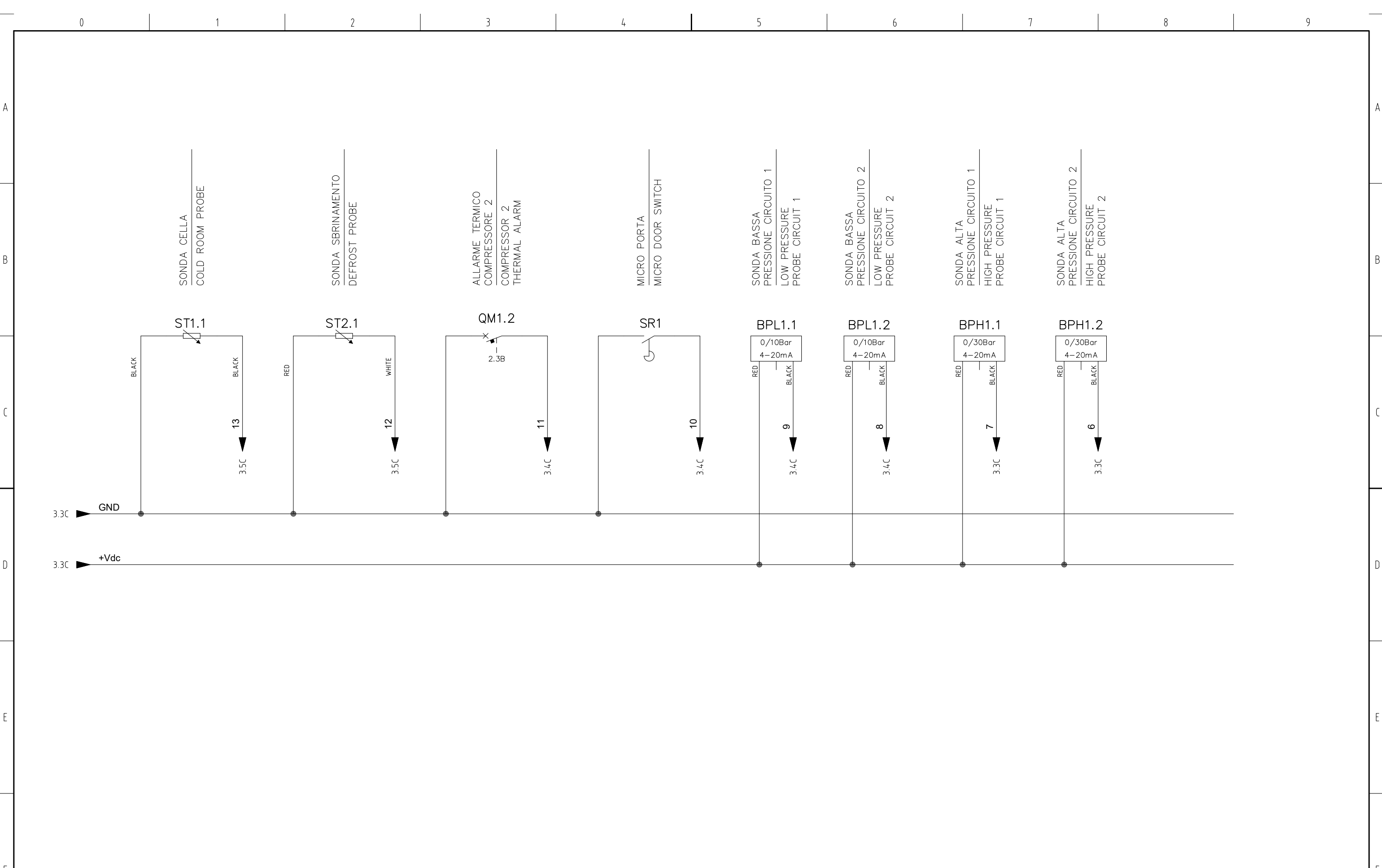
REV.	MODIFICA	DATA	FIRMA	APPR.	ROSSI	SOST. IL :	SOST. DA :	FILE : EBW21L28000P.dwg	RIVACOLD MASTERING COLD	BE-WT352LA60P11 1X350 BT 2 COMP.	EBW21L28000P	= +
										COPERTINA COVER	5603-0040	FG. 1 10 F.S. 2

SPINA ALIMENTAZIONE
1P+N+T 32A
POWER SUPPLY PLUG
1P+N+T 32A

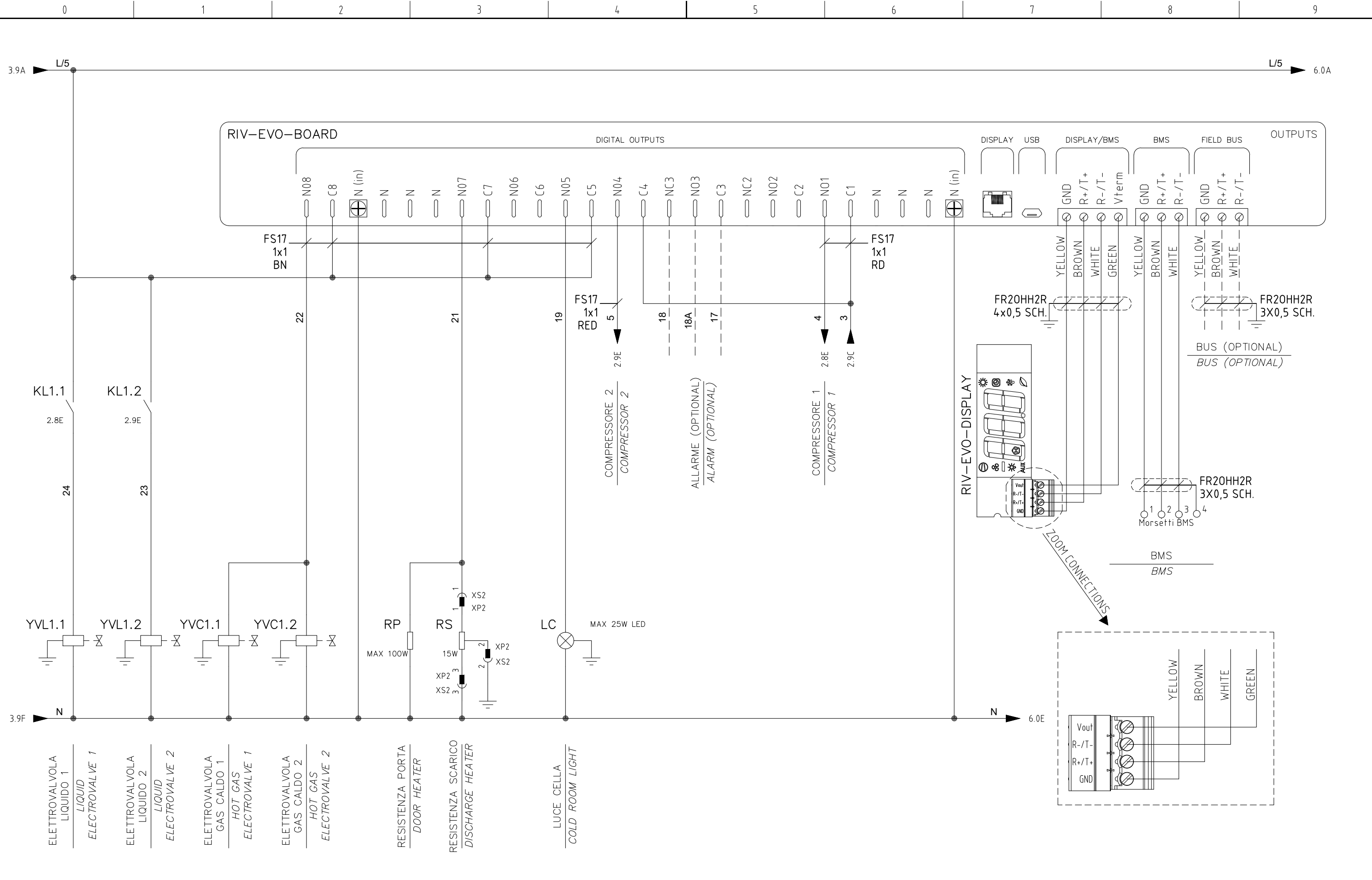


N.B. Prevedere interruttore magnetotermico per protezioni da sovracorrenti (In=20A - curva D)
nelle immediate vicinanze della macchina ed interruttore differenziale per protezione da guasti verso terra
N.B. Provide a circuit breaker (CB) for overcurrent protection (In=20A - Tripping Characteristic: D)
in the immediate vicinity of the machine and residual circuit device (RCD) for earth fault/residual current protection

REV.	MODIFICA	DATA	FIRMA	APPR.	ROSSI	SOST. IL :	SOST. DA :	FILE : EBW21L28000P.dwg	RIVACOLD MASTERING-COLD	BE-WT352LA60P11 1X350 BT 2 COMP.	EBW21L28000P	=	
										POTENZA COMPRESSORI+TRASFORMATORE TRANSFORMER+COMPRESSORS POWER		5603-0040	FG. 2 10 F.S. 3



REV.	MODIFICA	DATA	FIRMA	APPR.	ROSSI	SOST. IL :	SOST. DA :	FILE : EBW21L28000P.dwg	RIVACOLD MASTERING-COLD	BE-WT352LA60P11 1X350 BT 2 COMP.	EBW21L28000P	=	
										SONDE PROBES	5603-0040	+	FG. 4 10 F.S. 5



REV.	MODIFICA	DATA	FIRMA	APPR.	ROSSI	SOST. IL :	SOST. DA :	FILE : EBW21L28000P.dwg	BE-WT352LA60P11 1X350 BT 2 COMP.	EBW21L28000P	=	
									OUTPUTS STRUMENTO ELETTRONICO ELECTRONIC INSTRUMENT OUTPUTS		5603-0040	FG. 5 10 F.S. 6



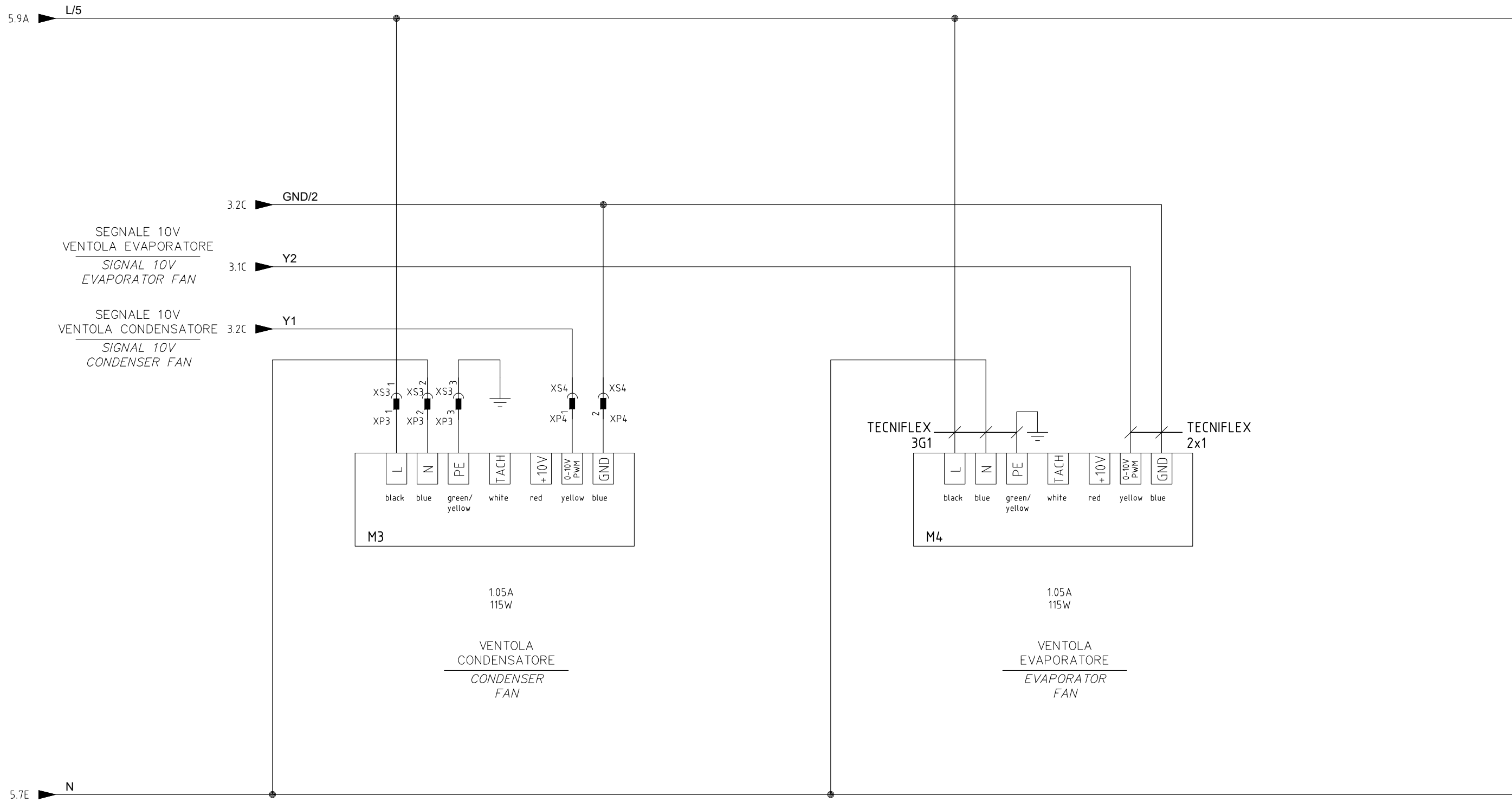
BE-WT352LA60P11
1X350 BT 2 COMP.

EBW21L28000P

OUTPUTS STRUMENTO ELETTRONICO
ELECTRONIC INSTRUMENT OUTPUTS

5603-0040

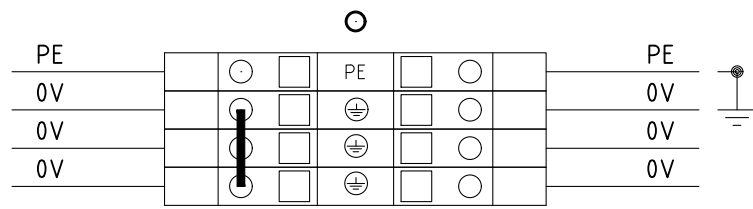
FG. 5 10
F.S. 6



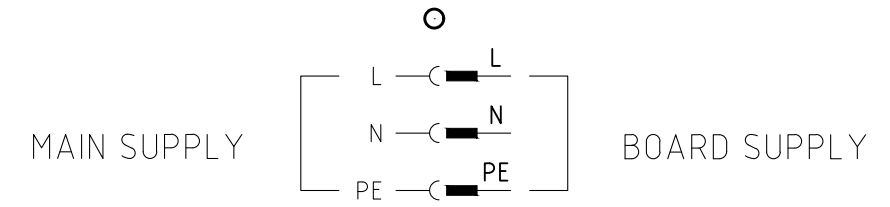
REV.	MODIFICA	DATA	FIRMA	APPR.	ROSSI	SOST. IL :	SOST. DA :	FILE : EBW21L28000P.dwg	RIVACOLD MASTERING-COLD	BE-WT352LA60P11 1X350 BT 2 COMP.	EBW21L28000P	= +
										VENTOLE FANS	5603-0040	FG. 6 10 F.S. 7

0 1 2 3 4 5 6 7 8 9

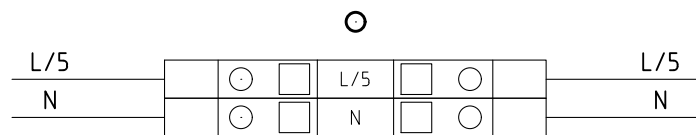
=QG - XT0
GRUOND TERMINAL



=QG - XP1
POWER SUPPLY PLUG



=QG - XT1
MAIN TERMINAL



A
B
C
D
E
F

A
B
C
D
E
F

				DATA	28/11/19				BE-WT352LA60P11 1X350 BT 2 COMP.	EBW21L28000P	=
				DISEGN.	ROSSI						+
				VISTO							
REV.	MODIFICA	DATA	FIRMA	APPR.	ROSSI	SOST. IL :	SOST. DA :	FILE : EBW21L28000P.dwg	MORSETTIERA TERMINAL BOARD	5603-0040	FG. 7 10 F.S. 8

0 1 2 3 4 5 6 7 8 9

Nome/Item	Quadro/Board	Tipo/Type	Descrizione IT (Db)	Descrizione EN (Db)	Costruttore/Marke	Fg/Sh	Q.ta/Q.ty	Codice Interno (Db)
	=QG =QG	280-633	MORSETTO 4 CONDUTTORI CAGE-CLAMP 2.5mmq	TERMINAL 4 WIRES CAGE-CLAMP 2.5mmq	Wago	10	3 1	99102051
25 x 80	=QG	02578	T1-EN 25X80 G CAN. CABL.		Bocchiotti	10	0.24	99100062
BPH1.1	=QG	YCQC03H101 YQCB02-013051	SONDA PRESSIONE 0/30Bar 4-20mA CAVO 3 FILI IPXX 1,5M SONDA SANHUA YCQC	PRESSURE PROBE 0/30Bar 4-20mA 3 WIRE CABLE IPXX 1,5M SANHUA PROBE YCQC	SANHUA SANHUA	4 1	1 1	YCQC03H101 YQCB02-013051
BPH1.2	=QG	YCQC03H101 YQCB02-013051	SONDA PRESSIONE 0/30Bar 4-20mA CAVO 3 FILI IPXX 1,5M SONDA SANHUA YCQC	PRESSURE PROBE 0/30Bar 4-20mA 3 WIRE CABLE IPXX 1,5M SANHUA PROBE YCQC	SANHUA SANHUA	4 1	1 1	YCQC03H101 YQCB02-013051
BPL1.1	=QG	YCQC01H101 YQCB02-013051	SONDA PRESSIONE 0/10Bar 4-20mA CAVO 3 FILI IPXX 1,5M SONDA SANHUA YCQC	PRESSURE PROBE 0/10Bar 4-20mA 3 WIRE CABLE IPXX 1,5M SANHUA PROBE YCQC	SANHUA SANHUA	4 1	1 1	YCQC01H101 YQCB02-013051
BPL1.2	=QG	YCQC01H101 YQCB02-013051	SONDA PRESSIONE 0/10Bar 4-20mA CAVO 3 FILI IPXX 1,5M SONDA SANHUA YCQC	PRESSURE PROBE 0/10Bar 4-20mA 3 WIRE CABLE IPXX 1,5M SANHUA PROBE YCQC	SANHUA SANHUA	4 1	1 1	YCQC01H101 YQCB02-013051
FU1	=QG	FUSIBILE	FUSIBILE INTERNO TRASFORMATORE	FUSE INSIDE TRANSFORMER	Rivacold	2	1	
KL1.1	=QG	RPF2BP7	RELE' 2/S 230V-30A 230V/1/50-60Hz	RELAY 2/S 230V-30A 230V/1/50-60Hz	Schneider	2	1	99107038
KL1.2	=QG	RPF2BP7	RELE' 2/S 230V-30A 230V/1/50-60Hz	RELAY 2/S 230V-30A 230V/1/50-60Hz	Schneider	2	1	99107038
KL3	=QG	RXG21P7 RGZE1S48M RSZL300	RELE' 2/S 230V-5A 230V/1/50-60Hz ZOCOLO 2/SC MINI ETICHETTA X ZOCCOLO RXG SCHNEIDER	RELAY 2/S 230V-5A 230V/1/50-60Hz RELAY SUPPORT 2/SC LABEL FOR SUPPORT RXG SCHNEIDER	Schneider Schneider Schneider	2 1 1	1 1 1	99107039 99107040 99107041
LC	=QG	ELx	LUCE CELLA	COLD ROOM LIGHT	Rivacold	5	1	
M1.1	=QG	COMPRESSORE	COMPRESSORE	COMPRESSOR	Rivacold	2	1	
M1.2	=QG	COMPRESSORE	COMPRESSORE	COMPRESSOR	Rivacold	2	1	
M3	=QG	A	VENTILATORE ELETTRONICO	ELECTRONIC FAN	Rivacold	6	1	
M4	=QG	A	VENTILATORE ELETTRONICO	ELECTRONIC FAN	Rivacold	6	1	
Morsetti BMS	=QG	280-633	MORSETTO 4 CONDUTTORI CAGE-CLAMP 2.5mmq	TERMINAL 4 WIRES CAGE-CLAMP 2.5mmq	Wago		1	99102051
PSH1.1	=QG	PSH	PRESSOSTATO ALTA GENERALE	MAIN HIGH PRESSURE SWITCH	Rivacold	2	1	
PSH1.2	=QG	PSH	PRESSOSTATO ALTA GENERALE	MAIN HIGH PRESSURE SWITCH	Rivacold	2	1	
QM1.1	=QG	M9F12110 M9A26924	MAGNETOTERMICO 1P 10A D CONTATTO LATERALE NO+NC	MAGNETOTHERMAL 1P 10A D LATERAL CONTACT NO-NC	Schneider Schneider	2 1	1 1	99107035 99107036
QM1.2	=QG	M9F12110 M9A26924	MAGNETOTERMICO 1P 10A D CONTATTO LATERALE NO+NC	MAGNETOTHERMAL 1P 10A D LATERAL CONTACT NO-NC	Schneider Schneider	2 1	1 1	99107035 99107036
QM2	=QG	M9F11104	MAGNETOTERMICO 1P 4A C	MAGNETOTHERMAL 1P 4A C	Schneider	2	1	99107037
RIV-EVO-BOARD	=QG	UP3ARI52RSCS1	SCHEDA ELETTRONICA EVOLUTION	ELECTRONIC BOARD EVOLUTION	Carel	3	1	RIV-EVO-BOARD
RIV-EVO-BOARD	=QG					5	1	
RIV-EVO-DISPLAY	=QG	AXRV01RSR1C81 62H021A005	DISPLAY PLED C/BLUETOOTH TASTIERA CAPACITIVA ORIZZONTALE	DISPLAY PLED WITH BLUETOOTH HORIZONTAL CAPACITIVE KEYBOARD	Carel Carel	5 1	1 1	RIV-EVO-DISPLAY RIV-EVO-KEYHOR
RP	=QG	RP	RESISTENZA PORTA	DOOR HEATER	Rivacold	5	1	
RS	=QG	RS	RESISTENZA DI SCARICO	DISCHARGE HEATER	Rivacold	5	1	
SR1	=QG	SR1	MICRO PORTA	DOOR MICRO	Rivacold	4	1	
ST1.1	=QG	NTC015HP00	SONDA PVC TEMPERATURA	PVC TEMPERATURE PROBE NTC	Carel	4	1	NTC015HP00
ST2.1	=QG	NTC015WH01	SONDA ACCIAIO TEMPERATURA	IRON TEMPERATURE PROBE NTC	Carel	4	1	NTC015WH01
TC1	=QG	438RIC2370	TRASFORMATORE 15.5VA 230V/230V C/FUS	TRANSFORMATOR 15.5VA 230V/230V C/FUS	Taddei	2	1	99107047
XT0	=QG	2002-1407 2002-1291	MORSETTO 4 CONDUTTORI TOPJOBS 2.5mmq TERRA FINALE PER MORSETTO 2 CONDUTTORI TOPJOBS 2.5mmq	TERMINAL 4 WIRES TOPJOBS 2.5mmq GROUND TERMINAL ENDING 2 WIRES TOPJOBS 2.5mmq	Wago Wago		2 1	99102947 99102940
XT1	=QG	2004-1404 2004-1491 2002-1401	MORSETTO 4 CONDUTTORI TOPJOBS 4mmq BLU FINALE PER MORSETTO 4 CONDUTTORI TOPJOBS 4mmq MORSETTO 4 CONDUTTORI TOPJOBS 2.5mmq	TERMINAL 4 WIRES TOPJOBS 4mmq BLUE TERMINAL ENDING 4 WIRES TOPJOBS 4mmq TERMINAL 4 WIRES TOPJOBS 2.5mmq	Wago Wago Wago		1 1 1	99102975 99102959 99102945
YVC1.1	=QG	YVC	SOLENOIDE GAS CALDO	HOT GAS ELECTROVALVE	Rivacold	5	1	

REV.	MODIFICA	DATA	FIRMA	APPR.	ROSSI	SOST. IL :	SOST. DA :	FILE : EBW21L28000P.dwg	BE-WT352LA60P11 1X350 BT 2 COMP.	EBW21L28000P	= +	FG. 8 10 F.S. 9
------	----------	------	-------	-------	-------	------------	------------	-------------------------	-------------------------------------	--------------	--------	--------------------

Nome/Item	Quadro/Board	Tipo/Type	Descrizione IT (Db)	Descrizione EN (Db)	Costruttore/Marke	Fg/Sh	Q.ta/Q.ty	Codice Interno (Db)
YVC1.2	=QG	YVC	SOLENOIDE GAS CALDO	HOT GAS ELECTROVALVE	Rivacold	5	1	
YVL1.1	=QG	YVL	SOLENOIDE LIQUIDO	LIQUID ELECTROVALVE	Rivacold	5	1	
YVL1.2	=QG	YVL	SOLENOIDE LIQUIDO	LIQUID ELECTROVALVE	Rivacold	5	1	

				DATA	28/11/19			<i>BE-WT352LA60P11 1X350 BT 2 COMP.</i>	EBW21L28000P	= +	
				DISEGN.	ROSSI						
				VISTO							
REV.	MODIFICA	DATA	FIRMA	APPR.	ROSSI	SOST. IL :	SOST. DA :	FILE : EBW21L28000P.dwg	LISTA COMPONENTI <i>COMPONENTS LIST</i>	5603-0040	FG. 9 10 F.S.10

0 1 2 3 4 5 6 7 8 9

A

A

B

B

C

C

D

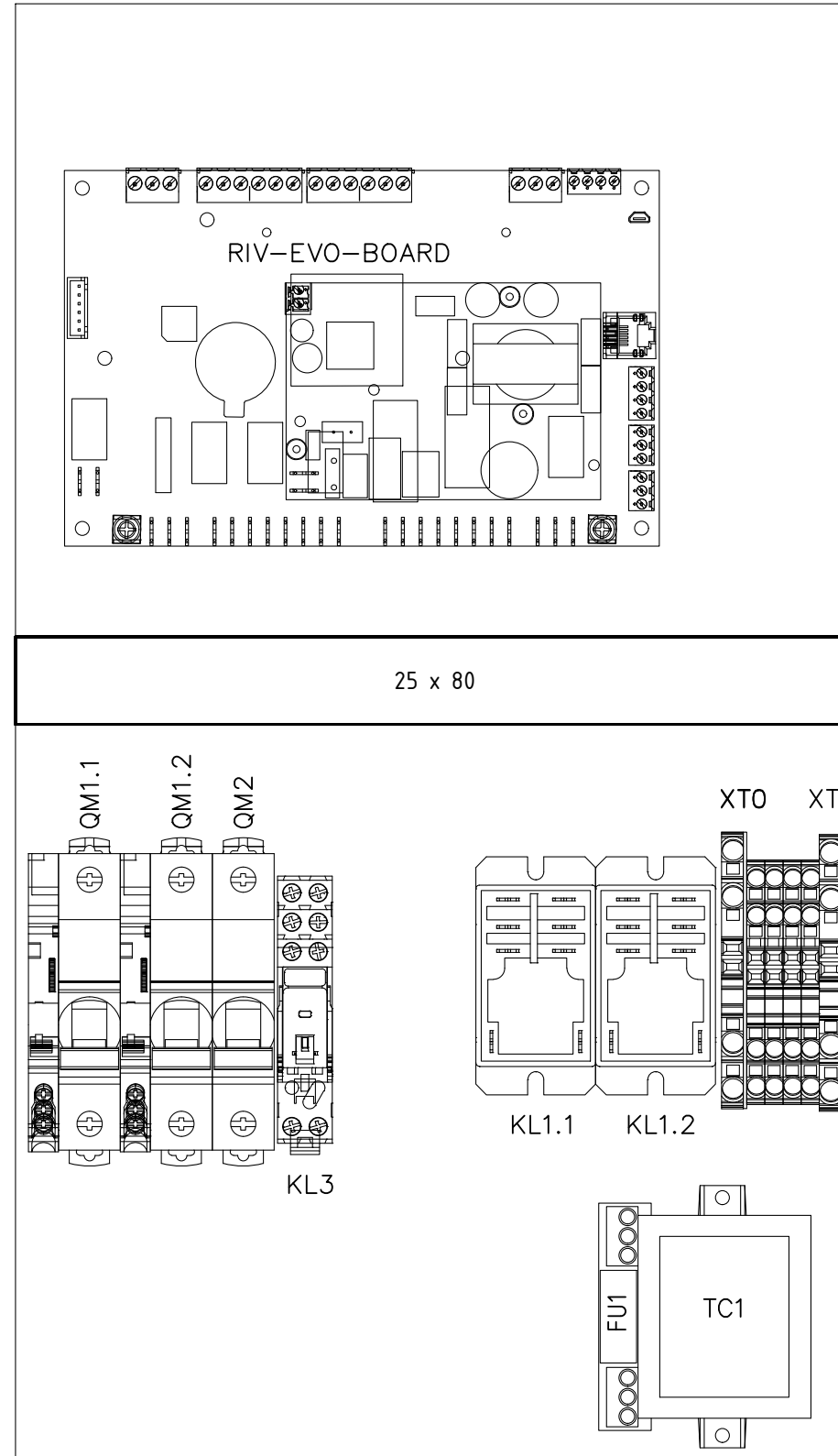
D

E

E

F

F



PIASTRA 240x416
SCALA 1:2

				DATA	28/11/19				<i>BE-WT352LA60P11</i> <i>1X350 BT 2 COMP.</i>	EBW21L28000P	= +
				DISEGN.	ROSSI						
				VISTO							
REV.	MODIFICA	DATA	FIRMA	APPR.	ROSSI	SOST. IL :	SOST. DA :	FILE : EBW21L28000P.dwg	LAYOUT INTERNO INTERNAL LAYOUT	5603-0040	FG.10 10 F.S. /

0 1 2 3 4 5 6 7 8 9