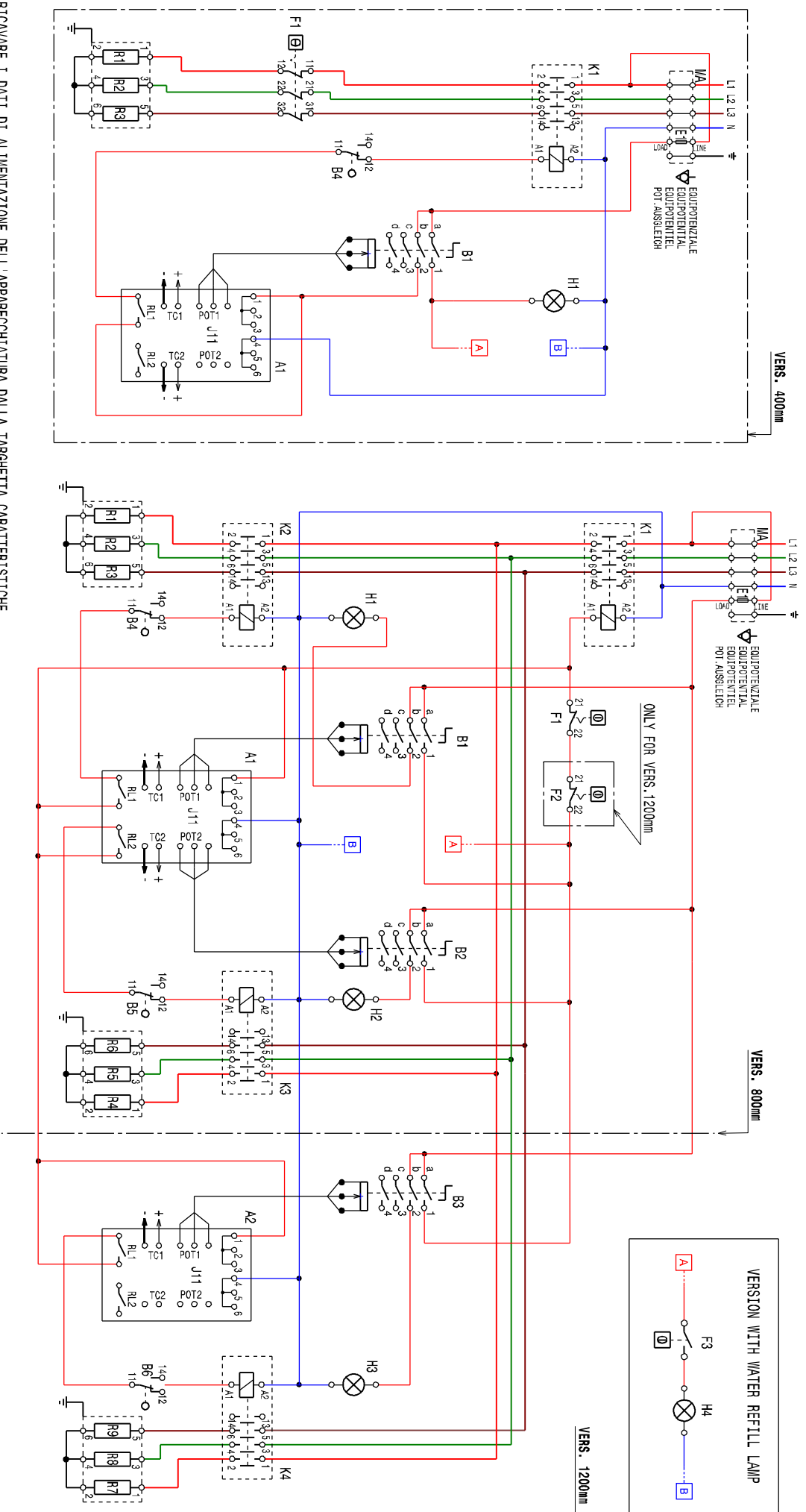


## Schaltplan

### Elektro-Kontaktgrill ERG9 / 2HT-HP





RICAVARE I DATI DI ALIMENTAZIONE DELL'APPARECCHIATURA DALLA TARGHETTA CARATTERISTICHE.  
 FOR APPLIANCE POWER SUPPLY VALUES REFER TO DATA LABEL.

E1: 1A "T"

MODEL 700 (400-415V)  
 400V 3N ~ 50/60Hz  
 3,45 kW/ 5A VERS. 400mm  
 6,9 kW/ 10A VERS. 800mm  
 10,35 kW/ 15A VERS. 1200mm

MODEL 700 (380-400V)  
 380V 3N ~ 50/60Hz  
 3,45 kW/ 5,2A VERS. 400mm  
 6,9 kW/ 10,5A VERS. 800mm  
 9,9 kW/ 13,9A VERS. 1200mm

MODEL 900 (415-430V)  
 430V 3N ~ 50/60Hz  
 3,3 kW/ 4,4A VERS. 400mm  
 6,6 kW/ 8,8A VERS. 800mm  
 9,9 kW/ 13,3A VERS. 1200mm

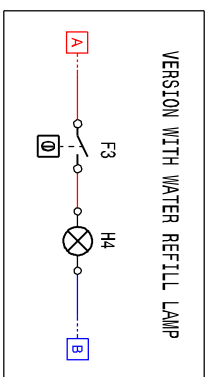
MODEL 900 (380-400V)  
 380V 3N ~ 50/60Hz  
 5,4 kW/ 7,8A VERS. 400mm  
 10,8 kW/ 15,6A VERS. 800mm  
 16,2 kW/ 23,4A VERS. 1200mm

F3	TERMOSTATO VASCA	TUB THERMOSTAT
B4-B5-B6	MICROINTERRUTTORE	MICROSWITCH
F1-F2	LIMITATORE DI TEMPERATURA	SAFETY THERMOSTAT
E1	FUSIBILE	FUSE
K1-2-3-4	CONTATTORE	CONTACTOR
R1-9	RESISTENZA	HEATING ELEMENT
A1-A2	SCHEDA CONTROLLO ENERGIA	ENERGY CONTROL BOARD
H4	LAMPADA SEGNALEZIONE RICARICO ACQUA	WATER REFILL LAMP
H1-2-3	LAMPADA "CORRENTE INSERITA"	POWER ON LAMP
B1-2-3	INTERRUTTORE + POTENZIOMETRO	SWITCH + POTENTIOMETER
MA	MORSETTIERA	MAIN TERMINAL BOARD

ELECTRIC DIAGRAM GRILL HP 700-900 400V 3P+N

From S/N :

N° : 602898M00



**Finanzen/Service**

**28307 Bremen**  
Thalendorststraße 15  
Tel.+49 421 48557-0  
Fax+49 421 488650  
bremen@nordcap.de

**Vertrieb Ost**

**12681 Berlin**  
Wolfener Straße 32/34, HausK  
Tel.+49 30 936684-0  
Fax+49 30 936684-44  
berlin@nordcap.de

**Vertrieb West**

**40699 Erkrath**  
Max-Planck-Straße 30  
Tel.+49 211 540054-0  
Fax+49 211 540054-54  
erkrath@nordcap.de

**Vertrieb Nord**

**21079 Hamburg**  
Großmoorbogen 5  
Tel.+49 40 766183-0  
Fax+49 40 770799  
hamburg@nordcap.de

**Vertrieb Süd**

**55218 Ingelheim**  
Hermann-Bopp-Straße 4  
Tel.+49 6132 7101-0  
Fax+49 6132 7101-20  
ingelheim@nordcap.de



[www.nordcap.de](http://www.nordcap.de)