

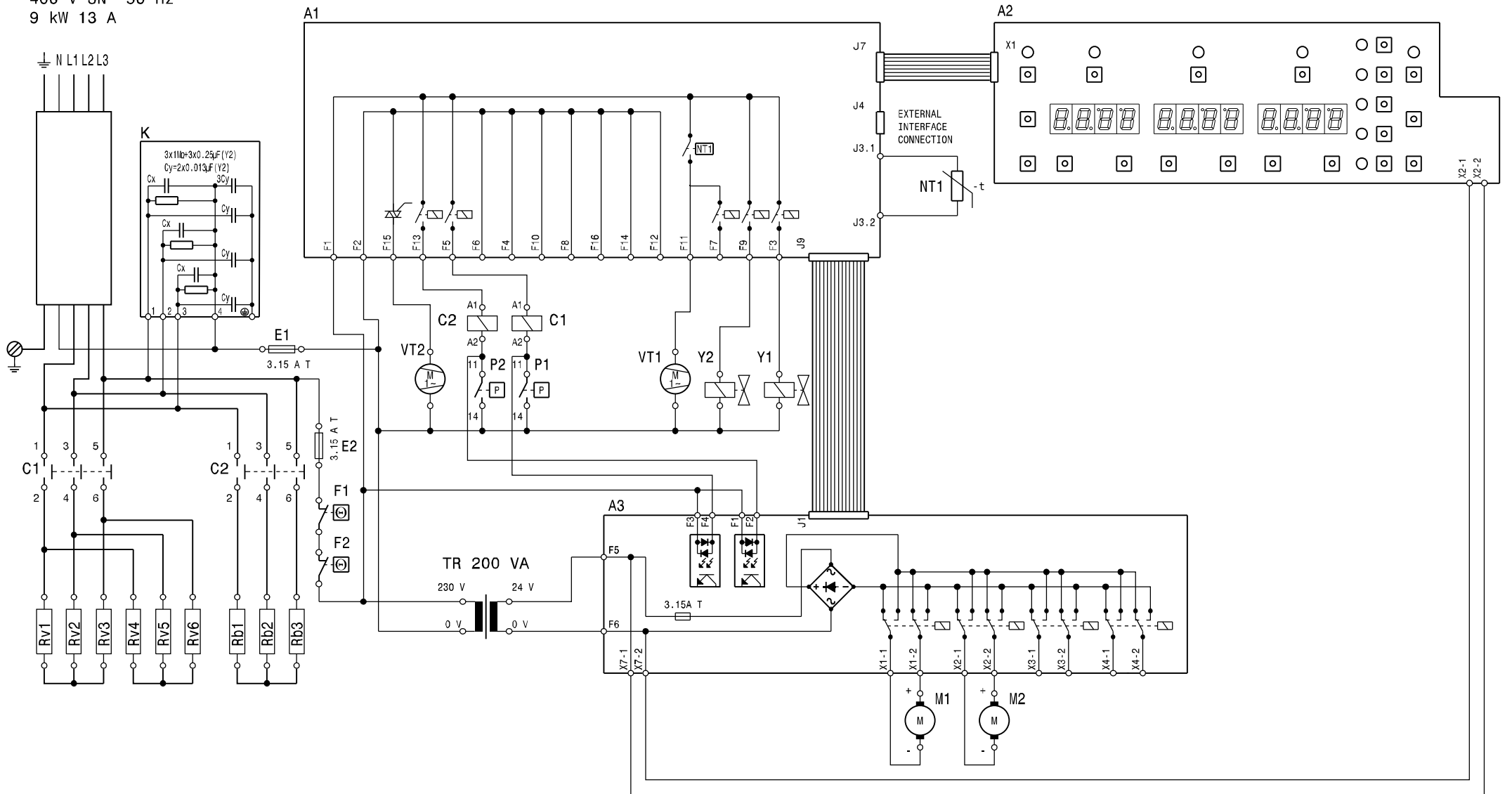
Schaltplan

Elektro-Pastakocher **ENK7 / 1BRS**

[Artikel-Nr.: 406372100]



400 V 3N~ 50 Hz
9 kW 13 A



| | | | | | |
|---------|------------------------------|-----------------------------|---|------------------------|-------------------|
| - | - | | P1 - 2 | PRESSOSTATO | PRESSOSTAT |
| - | - | | NT1 | SONDA TEMPERATURA | TEMPERATURE PROBE |
| - | - | | VT1 - 2 | VENTOLA RAFFREDDAMENTO | COOLING FAN |
| F1 - 2 | LIMITATORE TEMPERATURA | TEMPERATURE LIMITER | M1 - 2 | MOTORE SOLLEVAMENTO | BASKET LIFT MOTOR |
| Y2 | ELETTROVALVOLA CARICO LENTO | SLOW FILLING SOLENOID VALVE | E1 - 2 | FUSIBILE | FUSE |
| Y1 | ELETTROVALVOLA CARICO VELOCE | FAST FILLING SOLENOID VALVE | C1 - 2 | CONTATTORE | CONTACTOR |
| TR | TRASFORMATORE | TRANSFORMER | A3 | SCHEDA RELE ' | LIFTERS BOARD |
| K | FILTRO RADIODISTURBI | R.F.I.FILTER | A2 | INTERFACCIA UTENTE | USER INTERFACE |
| Rb1 - 3 | RESISTENZA BOILER | BOILER HEATER | A1 | SCHEDA MADRE | MAIN BOARD |
| Rv1 - 6 | RESISTENZA VASCA | TANK HEATER | CUOCIPASTA EL. 20L AUTOMATICO ELETTRONICO | | From S/N : |
| | | | | | N°: 602886801 |

Finanzen/Service

28307 Bremen
Thalenhorststraße 15
Tel.+49 421 48557-0
Fax+49 421 488650
bremen@nordcap.de

Vertrieb Ost

12681 Berlin
Wolfener Straße 32/34, Haus K
Tel.+49 30 936684-0
Fax+49 30 936684-44
berlin@nordcap.de

Vertrieb West

40699 Erkrath
Max-Planck-Straße 30
Tel.+49 211 540054-0
Fax+49 211 540054-54
erkrath@nordcap.de

Vertrieb Nord

21079 Hamburg
Großmoorbogen 5
Tel.+49 40 766183-0
Fax+49 40 770799
hamburg@nordcap.de

Vertrieb Süd

55218 Ingelheim
Hermann-Bopp-Straße 4
Tel.+49 6132 7101-0
Fax+49 6132 7101-20
ingelheim@nordcap.de



www.nordcap.de