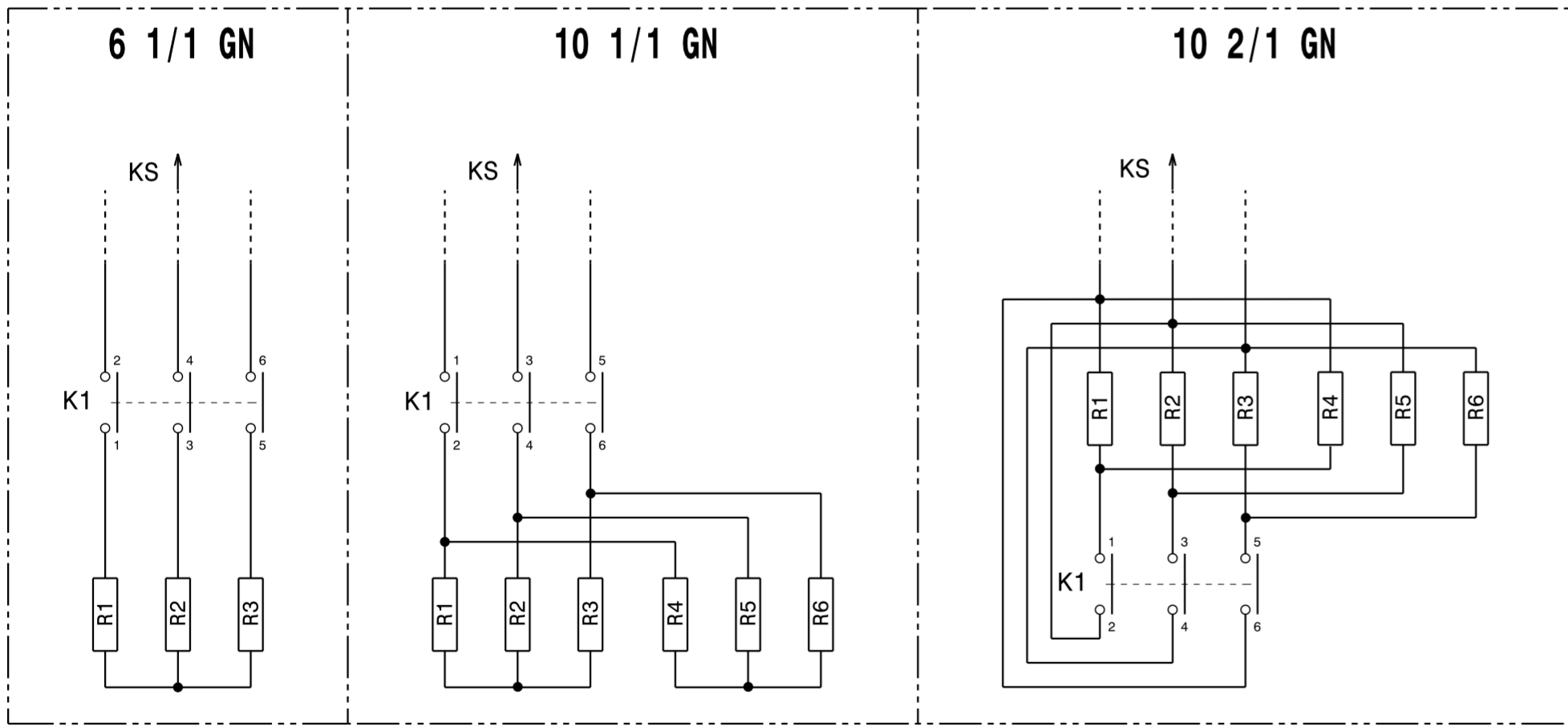
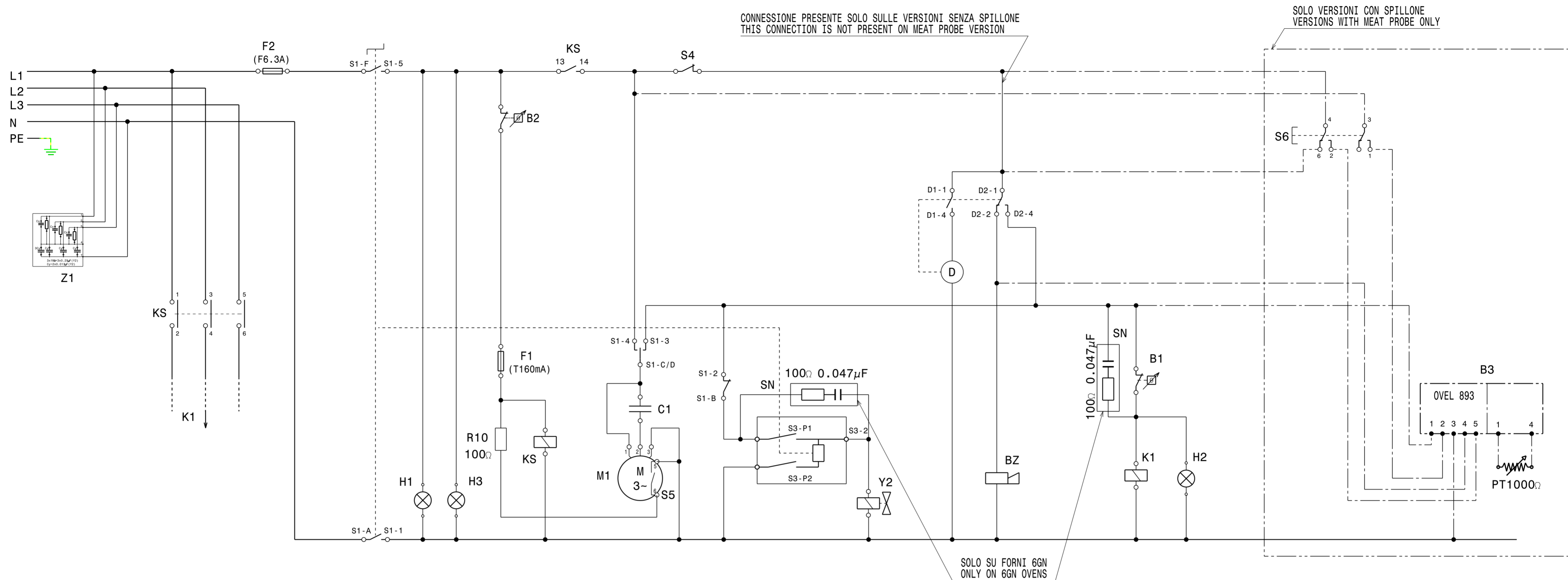


Schaltplan

Konvektionsofen EK / 6xGN 1/1

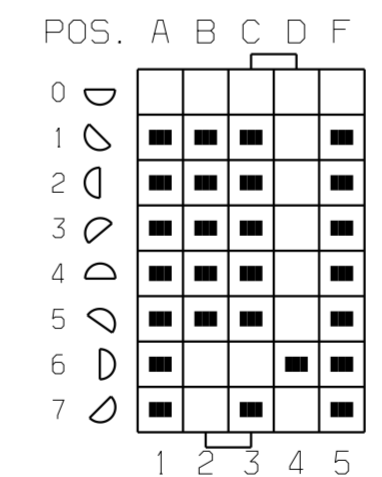
[Artikel-Nr.: 406240205]





**SCHEMA DI COMMUTAZIONE S1
S1 SWITCHING SCHEME**

Rotazione oraria, vista frontale alberino
Clockwise rotation in front of the shaft



380/400V-3N-50/60Hz

P= 7,7 kW I=11,5 A (E6 1/1)
P=17,3 kW I=26 A (E10 1/1)
P=24,5 kW I=36,5 A (E10 2/1)

| | | | | | | | |
|-------|-------------------------|--------------------|---------------|------------------------------|--------------------------|--|--|
| B1 | TERMOSTATO DI LAVORO | WORKING THERMOSTAT | L1/L2/L3/N/PE | MORSETTIERA DI ALIMENTAZIONE | TERMINAL BOARD | | |
| B2 | TERMOSTATO DI SICUREZZA | SAFETY THERMOSTAT | M1 | MOTORE VENTILATORE CELLA | CAVITY FAN MOTOR | | |
| B3 | SPILLONE | MEAT PROBE | R. | RESISTENZE CELLA | CAVITY HEATERS | | |
| BZ | BUZZER | BUZZER | R10 | RESISTENZA 100Ω | 100Ω RESISTOR | | |
| C1 | CONDENSATORE MOTORE | MOTOR CAPACITOR | S1 | INTERRUTTORE GENERALE | MAIN SWITCH | | |
| D | TIMER | TIMER | S3 | REGOLATORE DI ENERGIA | HUMIDIFIER REGULATOR | | |
| F1/F2 | FUSIBILI 5X20 | 5X20 FUSES | S4 | INTERRUTTORE PORTA | DOOR SWITCH | | |
| H1 | LAMPADA MACCHINA "ON" | "POWER ON" LAMP | S5 | PROTEZIONE TERMICA | THERMAL CUT-OUT | | |
| H2 | LAMPADA TERMOSTATO | WORKING THERMOSTAT | S6 | DEVIATORE SPILLONE | MEAT PROBE ON-OFF SWITCH | | |
| H3 | LAMPADA CELLA | CAVITY LAMP | SN | FILTRO SMORZATORE | SNUBBER | | |
| K1 | CONTATTORE POTENZA | POWER CONTACTOR | Y2 | ELETTROVALVOLA UMIDIFICATORE | HUMIDIFIER SOLENOID | | |
| KS | CONTATTORE SICUREZZA | SAFETY CONTACTOR | Z1 | FILTRO ANTIDISTURBO | R.F.I. FILTER | | |

Finanzen / Service

28307 Bremen

Thalenhorststraße 15
Tel.+49 421 48557-0
Fax+49 421 488650
bremen@nordcap.de

Vertrieb Ost

12681 Berlin

Wolfener Straße 32/34, Haus K
Tel.+49 30 936684-0
Fax+49 30 936684-44
berlin@nordcap.de

Vertrieb West

40699 Erkrath

Max-Planck-Straße 30
Tel.+49 211 540054-0
Fax+49 211 540054-54
erkrath@nordcap.de

Vertrieb Nord

21079 Hamburg

Großmoorbogen 5
Tel.+49 40 766183-0
Fax+49 40 770799
hamburg@nordcap.de

Vertrieb Süd

55218 Ingelheim

Hermann-Bopp-Straße 4
Tel.+49 6132 7101-0
Fax+49 6132 7101-20
ingelheim@nordcap.de



www.nordcap.de